

AVISON YOUNG

Retail For Lease

10405 Jasper Avenue Edmonton, AB

- Prime location on Jasper Avenue between 104 Street and 105 Street
- Anchored by Shoppers Drug Mart
- Opportunities available with access/visibility to Jasper Avenue and interior food court space
- Spaces available range from 648 sf to 1,843 sf
- Bay Enterprise LRT station located on east side of building
- Tenants would have access to office tower amenities including conference rooms and fitness centre



Get more
information

Ellie Scott
Associate
780 702 0697
ellie.scott@avisonyoung.com

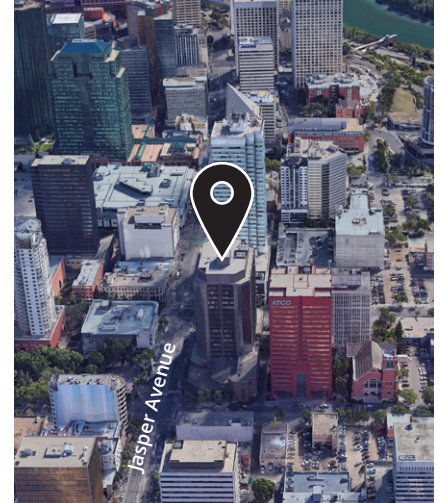
avisonyoung.com

Retail For Lease

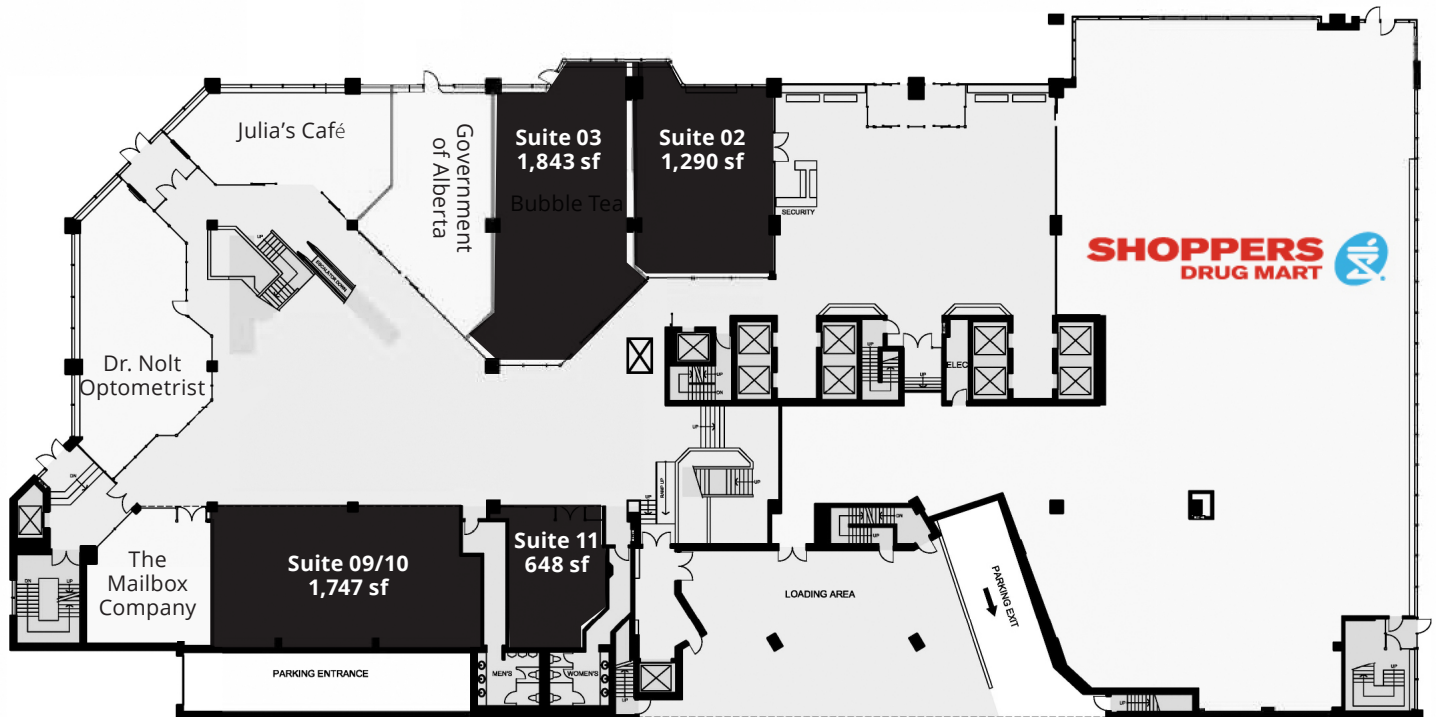
10405 Jasper Avenue, Edmonton

Offering Summary

Building Size:	Suite 02: 1,290 sf Suite 03: 1,843 sf Suite 09/10: 1,747 sf (demisable) Suite 11: 648 sf
Rental Rate:	Market
Additional Rent:	\$17.77 psf (2021)
Parking Ratio:	1 stall per 1,400 sf leased
Parking Rates:	Tandem \$210 Unreserved \$280 Reserved \$340



Within 1 km **18,578** Population **12,778** Daytime Employees



Ellie Scott
Associate
780 702 0697
ellie.scott@avisonyoung.com

