



**CUSHMAN &
WAKEFIELD**

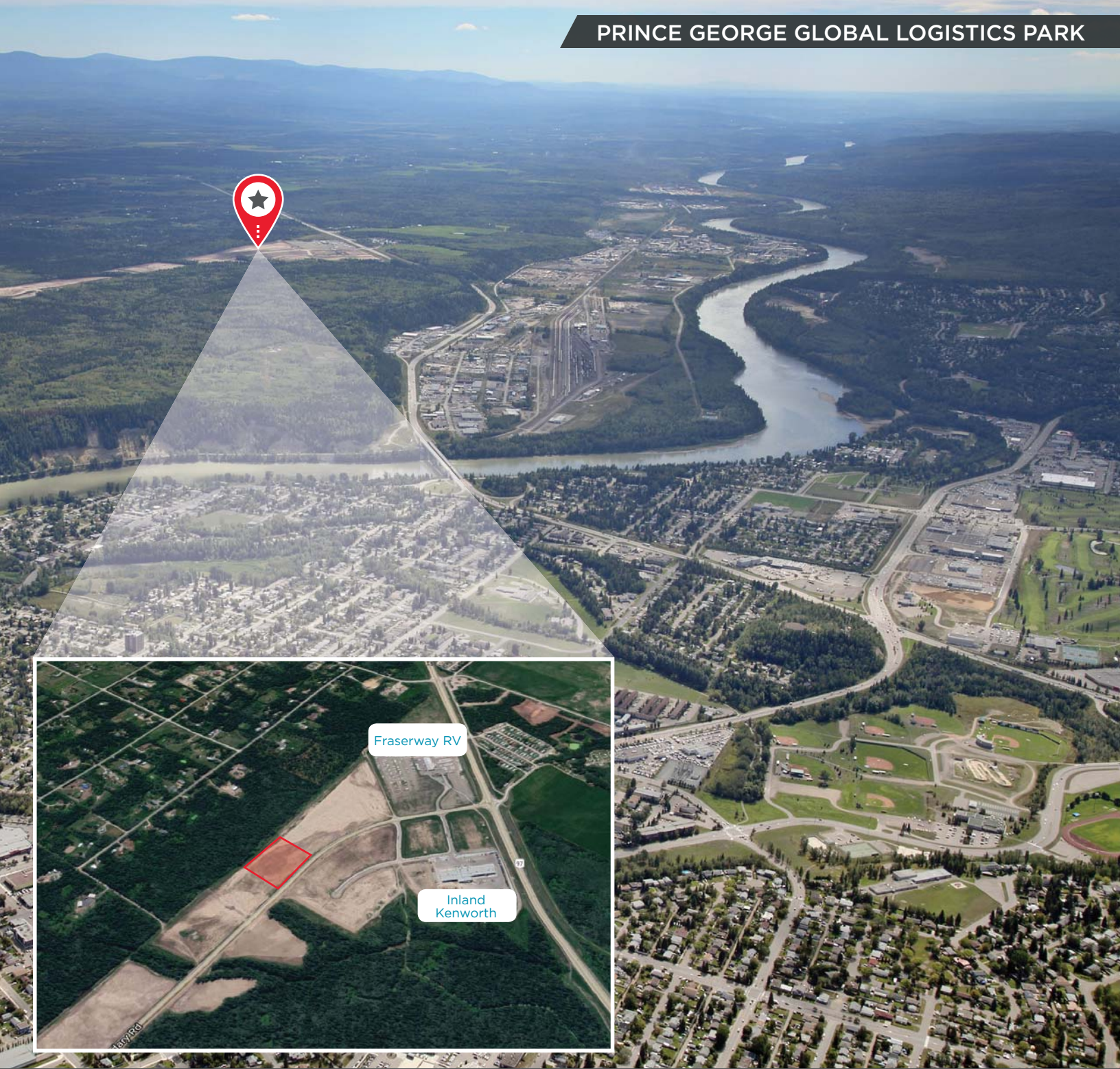
FOR SALE

±10 ACRES

BOUNDARY ROAD

PRINCE GEORGE, BC

PRINCE GEORGE GLOBAL LOGISTICS PARK



Bill Randall

Personal Real Estate Corporation
Senior Vice President, Industrial
604 608 5967
bill.randall@cushwake.com



**CUSHMAN &
WAKEFIELD**

FOR SALE

±10 ACRES

**BOUNDARY ROAD
PRINCE GEORGE, BC**

LOCATION

Prince George is a bustling city of over 78,000 people (and 250,000 people within the trading area) situated at the crossroads of Highway 97 and Highway 16 (east west). As a major city of the Pacific Rim, Prince George is firmly tied to the global market.

SITE DESCRIPTION

Large industrial lot in Prince George located on Boundary Road with highway frontage and great exposure. Site is serviced.

SITE SIZE

±10 acres

LEGAL DESCRIPTION

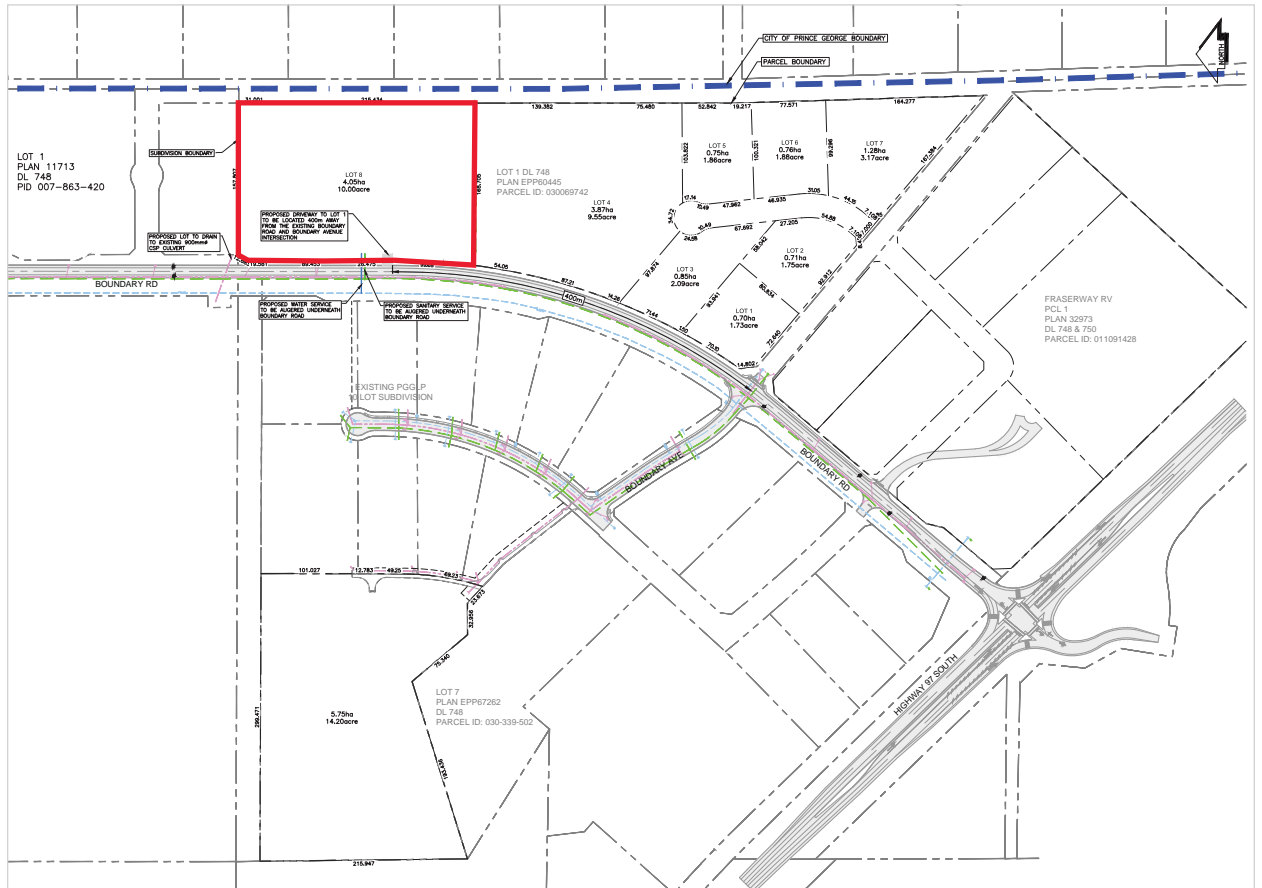
Lot, DL 748 Cariboo District Plan EPP60445
PID: 030-069-742

ZONING

M2 (General Industrial)

ASKING PRICE

\$2,850,000



Bill Randall

Personal Real Estate Corporation
Senior Vice President, Industrial
604 608 5967
bill.randall@cushwake.com

E.&O.E.: This communication is not intended to cause or induce breach of an existing agency agreement.

The information contained herein was obtained from sources which we deem reliable and, while thought to be correct, is not guaranteed by Cushman & Wakefield ULC 10/19 bg