

# Meadowood Professional Centre 5 - 1549 St. Mary's Road, Winnipeg



## FOR SUBLEASE DEVELOPED MAIN FLOOR SPACE



A.S.H. Management Group Inc., Broker  
233 Portage Avenue, Suite 100,  
Winnipeg, MB R3B 2A7  
Ph: 204-982-7973  
[ashmanagementgroup.com](http://ashmanagementgroup.com)

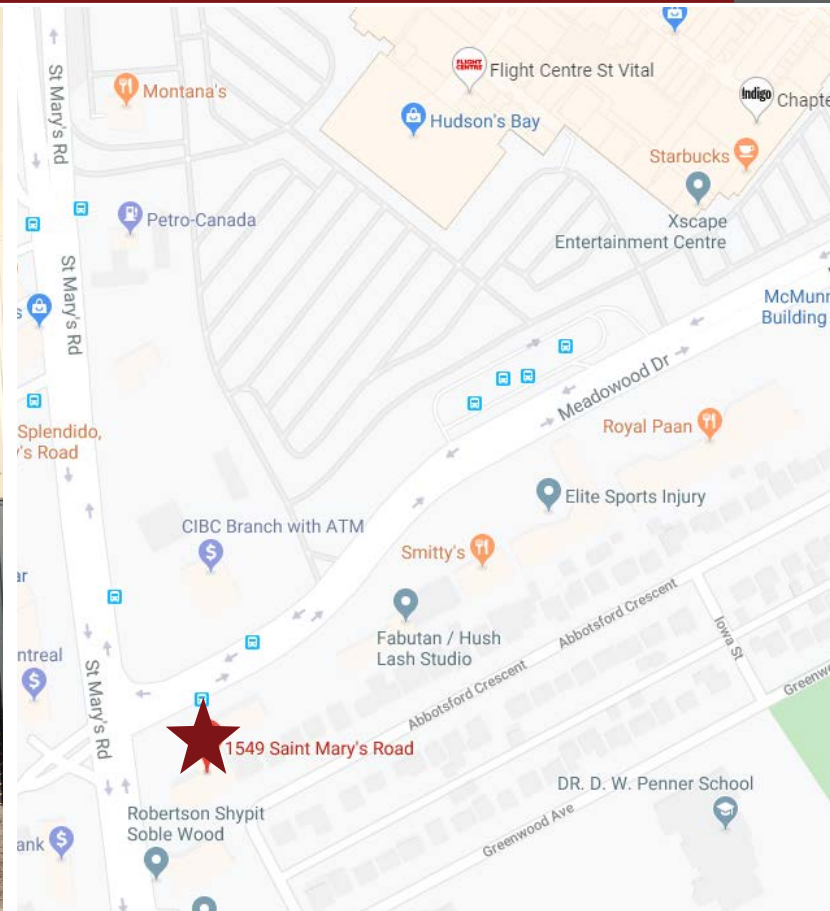
Jack S. Hurtig, B.A., B. Admin, Broker  
Vice-President, Real Estate Brokerage  
Dir: 204-982-7978  
[jhurtig@ashmanagementgroup.com](mailto:jhurtig@ashmanagementgroup.com)

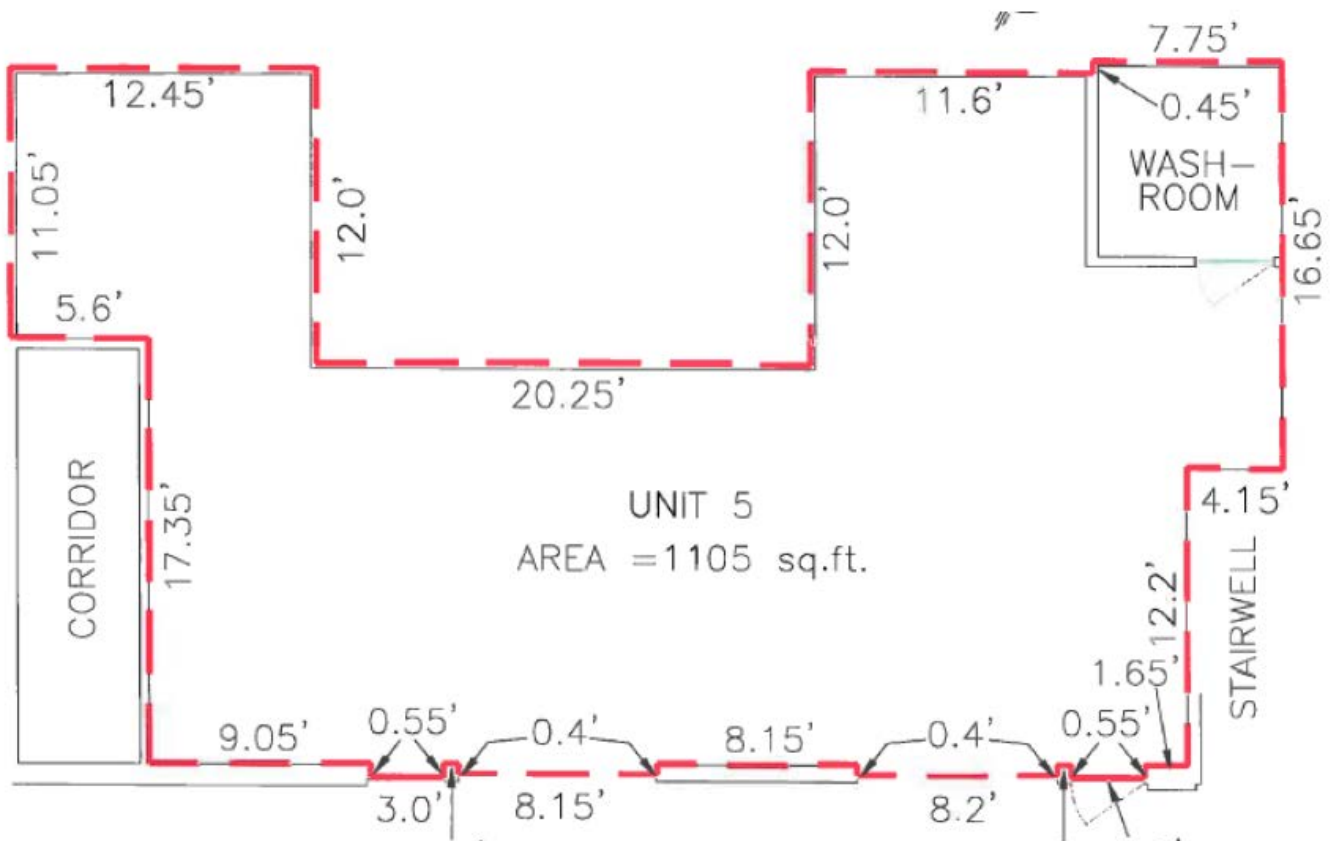
Tanya Spradbrow, Sales Representative  
Real Estate Brokerage Coordinator  
Dir: 204-982-7978  
[tspradbrow@ashmanagementgroup.com](mailto:tspradbrow@ashmanagementgroup.com)

**ASH**  
A.S.H. MANAGEMENT GROUP INC.  
BROKER

January 2021

Address	Available Space (sf ±)	Gross Rental Rate (per month)	
5- 1549 St. Mary's Road	1,105	\$2,205.00 <sup>1</sup>	
<ul style="list-style-type: none"> <li>• Office/retail.</li> <li>• Located on the southeast corner of Meadowood Drive and St. Mary's Road intersection, directly across from the St. Vital Shopping Centre.</li> <li>• South facing glazing.</li> <li>• Exterior signage opportunity.</li> <li>• Ample parking.</li> </ul>		<ul style="list-style-type: none"> <li>• <sup>1</sup> Inclusive of CAM, hydro, gas and water utilities.</li> <li>• Available immediately.</li> <li>• Headlease expiry September 30, 2024.</li> <li>• <a href="#">Click here for more details</a></li> <li>• E &amp; OE</li> </ul>	





May not be exactly as shown. For information purposes only.