

#G203 & #G204 - 15149 56TH AVENUE,  
SURREY, B.C.

# PANORAMA VILLAGE



AREA CERTIFICATION: AUGUST 10, 2018

As evidenced by our signature and in accordance with the ANSI/BOMA Z65.1-2010 Office Buildings: Standard Methods of Measurement, we hereby certify the Occupied Area of this space to be 3,905 Square Feet.

  
CRAIG W. NICHOLS  
MEASURE MASTERS

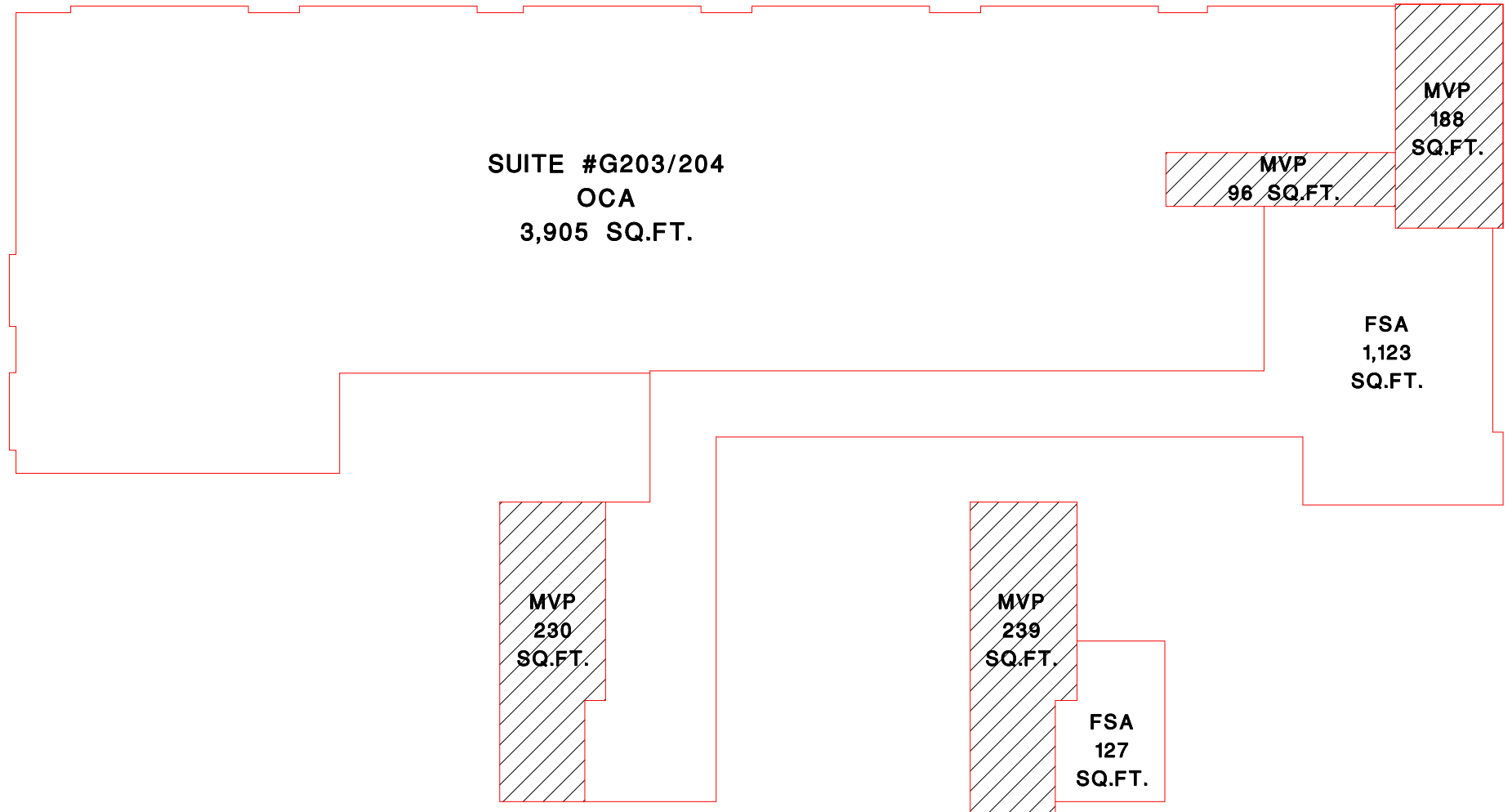


DRAWN BY: CN  
DATE: AUGUST 2018  
REVISED:



#G203 & #G204 - 15149 56TH AVENUE,  
SURREY, B.C.

# PANORAMA VILLAGE



AREA CERTIFICATION: AUGUST 10, 2018

As evidenced by our signature and in accordance with the  
ANSI/BOMA Z65.1-2010 Office Buildings: Standard Methods of Measurement,  
we hereby certify the Occupied Area of this space to be 3,905 Square Feet.

CRAIG W. NICHOLS  
MEASURE MASTERS

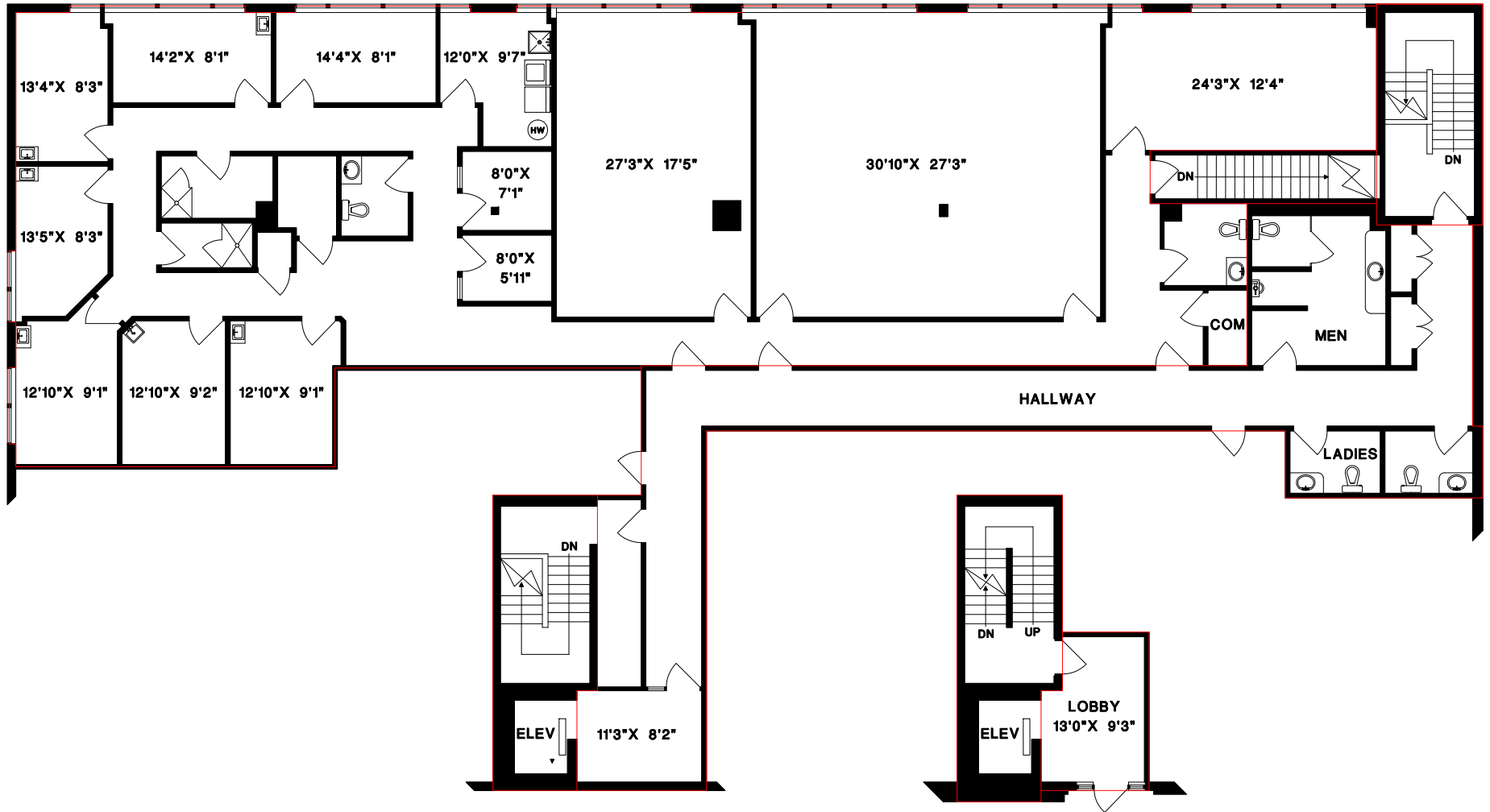


DRAWN BY: CN  
DATE: AUGUST 2018  
REVISED:



#G203 & #G204 - 15149 56TH AVENUE,  
SURREY, B.C.

# PANORAMA VILLAGE



AREA CERTIFICATION: AUGUST 10, 2018

As evidenced by our signature and in accordance with the ANSI/BOMA Z65.1-2010 Office Buildings: Standard Methods of Measurement, we hereby certify the Occupied Area of this space to be 3,905 Square Feet.

  
CRAIG W. NICHOLS  
MEASURE MASTERS



DRAWN BY: CN  
DATE: AUGUST 2018  
REVISED:

